

MOBOTIX HiRes IP Cameras

Professional Hi-Resolution IP Video Solutions

Megapixel

1280 x 960
software zoom

30 Frames/s

VGA (640 x 480)
10 F/s Mega

-22°F ... +140°F

Weatherproof

- 30° ... +60°C, IP65
no heating necessary

IEEE 802.3af

PoE

network power
even in winter

microphone & speaker

Audio

bi-directional via IP
variable framerates

SIP-Client with video

IP-Telephony

alarm notify,
cam remote control

Video motion

multiple windows
precision pixel-based

lip-synchronized audio

Recording

event-ringbuffer
30 cams each 30 F/s

Live viewing

30 cams at 30 F/s
all on one screen

Backlight

safe using CMOS
without mechanical iris

Wall bracket

with cable cover
for RJ45 wall outlet

Robust

no moving parts
fiber glass housing

*Prices excl. shipping, insurance, duties and taxes • Subject to change without notice

Allround M22M



135 x 109 mm

from 598.- €*

- **Outdoor camera (IP65) with exchangeable lenses** for indoor/outdoor use, available as Day or Night version
- Lenses available from Super Wide-Angle (90°) to tele (15°)
- Exposure time 1 lux at 1/60 sec., 0.05 lux at 1 sec.
- Microphone and speaker with full audio functionality (VoIP and SIP telephony, including Video SIP)
- Universal wall/ceiling mount perfectly covers RJ45 outlet and conceals the cabling

DualNight M12D



130 x 175 mm

from 1098.- €*

- **Dual outdoor camera (IP65)** with brilliant image quality during the day and highest sensitivity at night thanks to **two separate image sensors for color and B/W**
- Ideal for challenging lighting conditions or IR lighting
- PIR sensor for motion detection in the dark
- Microphone and speaker with full audio functionality (VoIP and SIP telephony, including Video SIP)
- Integrated ISDN S0 connection (telephony, Internet)
- Integrated switch functions (2 x input, 2 x output), RS232
- Concealed cabling for RJ45 wall outlet

Allround D22M



Ø 160 mm

from 448.- €*

- **Outdoor dome camera (IP65) with exchangeable lenses and optional Vandalism, On-Wall and In-Ceiling sets**
- Lenses available from Super Wide-Angle (90°) to tele (15°)
- Exposure time 1 lux at 1/60 sec., 0.05 lux at 1 sec.
- Vandalism set consists of stainless steel ring (polished, matt, powder-coated) and reinforced dome
- On-Wall set features concealed cabling and space for expansion modules (batteries, UMTS, WiFi, etc.)
- Outdoor wall mount (IP65) with space for expansion modules

DualDome D12D



Ø 200 mm

from 998.- €*

- **Dual dome camera** with brilliant image quality during the day and highest sensitivity at night thanks to **two individual image sensors** for color and B/W
- 180° panorama with 2.5 megapixels
- PIR sensor for motion detection in the dark
- Microphone and speaker with full audio functionality (VoIP and SIP telephony, including Video SIP)
- Integrated ISDN S0 connection (telephony, Internet)
- Integrated switch functions (2 x input, 2 x output), RS232
- Outdoor wall mount (IP65), space for expansion modules

MxControlCenter



free of charge
Download

- Prof. **control center software**, incl. alarm management
- High performance with 30 smooth video streams
- Synchronized event search for multiple cameras
- Image post-processing (contrast, zoom, distortion corr.)
- Supports integration of analog & digital PTZ cameras
- Simultaneous recording, live video and playback
- Auto-alerting by remote cameras
- Layout editor for floor plans

Security-Vision-Systems



MOBOTIX HiRes IP Cameras 1



... the new face of IP video



Model: M22M-IT-D22
Indoor/Outdoor: In/Outdoor, weatherproof, -30...+60°C
Resolution: VGA (640x480 Pixel), color
Pan/Tilt/Zoom: N/A
Frame Rate (Mono): 30 fps VGA • 30 fps CIF
Sensitivity: 1 lux (t=1/60sec) • 0.05 lux (t=1/1sec)
Interfaces: Ethernet 10/100 Mbps
Video Ring Buffer: 32 MB / external up to 1 Terabyte
Audio/Telephony: Bidirectional, VoIP, IP Telephony
Power Sup. • In/Out: PoE or MX-NPA-Set • Via Cam-IO
Software Features: FTP, e-mail, video alarm management, video motion, MultiView, event search
Arming • Triggering: 365 day schedule • multiple events
External Storage: Ring buffer on PC/server/NAS
Lenses: (eq. 35mm) Super Wide Angle (22mm, 90°, F 2.0)
Prices: 598 EUR



Model: M22M-Sec
Indoor/Outdoor: In/Outdoor, weatherproof, -30...+60°C
Resolution: MEGA (1280x960 pixels), color
Pan/Tilt/Zoom: 1x, 2x, 4x • Zoom & Pan/Tilt (digital)
Frame Rate (Mono): 30 fps VGA • 30 fps CIF • 10 fps MEGA
Sensitivity: 1 lux (t=1/60sec) • 0.05 lux (t=1/1sec)
Interfaces: Ethernet 10/100 Mbps
Video Ring Buffer: 64 MB / external up to 1 Terabyte
Audio/Telephony: Bidirectional, VoIP, IP Telephony
Power Sup. • In/Out: PoE or MX-NPA-Set • Via Cam-IO
Software Features: FTP, e-mail, video alarm management, video motion, MultiView, event search
Arming • Triggering: 365 day schedule • multiple events
External Storage: Ring buffer on PC/server/NAS
Lenses: (eq. 35mm) Super Wide Angle (22mm, 90°, F 2.0), 32mm, 43mm, 65mm, 135mm
Prices: 798 EUR



Model: M22M-Sec-Night
Indoor/Outdoor: In/Outdoor, weatherproof, -30...+60°C
Resolution: MEGA (1280x960 pixels), B/W
Pan/Tilt/Zoom: 1x, 2x, 4x • Zoom & Pan/Tilt (digital)
Frame Rate (Mono): 30 fps VGA • 30 fps CIF • 10 fps MEGA
Sensitivity: 0.1 lux (t=1/60sec) • 0.005 lux (t=1/1sec)
Interfaces: Ethernet 10/100 Mbps
Video Ring Buffer: 64 MB / external up to 1 Terabyte
Audio/Telephony: Bidirectional, VoIP, IP Telephony
Power Sup. • In/Out: PoE or MX-NPA-Set • Via Cam-IO
Software Features: FTP, e-mail, video alarm management, video motion, MultiView, event search
Arming • Triggering: 365 day schedule • multiple events
External Storage: Ring buffer on PC/server/NAS
Lenses: (eq. 35mm) Super Wide Angle (22mm, 90°, F 2.0), 32mm, 43mm, 65mm, 135mm
Prices: 798 EUR



Model: M12M-Web-D43
Indoor/Outdoor: In/Outdoor, weatherproof, -30...+60°C
Resolution: MEGA (1280x960 pixels), color
Pan/Tilt/Zoom: 1x, 2x, 4x • Zoom & Pan/Tilt (digital)
Frame Rate (Mono): 30 fps VGA • 30 fps CIF • 10 fps MEGA
Sensitivity: 1 lux (t=1/60sec) • 0.05 lux (t=1/1sec)
Interfaces: ISDN, Ethernet 10/100 Mbps
Video Ring Buffer: 12 MB
Audio/Telephony: N/A
Power Sup. • In/Out: PoE or MX-NPA-Set • N/A
Software Features: Logo Generator, FTP, e-mail
Arming • Triggering: 7 day schedule • multiple events
External Storage: FTP, triggered by events/time schedule
Lenses: (eq. 35mm) Wide-angle only (43mm, F 2.0)
Prices: 798 EUR



Model: M12D-IT-DNight-D43N43
Indoor/Outdoor: In/Outdoor, weatherproof, -30...+60°C
Resolution: 2 x VGA (640x480 ea.), color & B/W
Pan/Tilt/Zoom: N/A
Frame Rate (Mono): 30 fps VGA • 30 fps CIF
Sensitivity: 0.1 lux (t=1/60sec) • 0.005 lux (t=1/1sec)
Interfaces: ISDN, Ethernet 10/100 Mbps, RS232
Video Ring Buffer: 32 MB / external up to 1 Terabyte
Audio/Telephony: Bidirectional, VoIP, IP/ISDN Telephony
Power Sup. • In/Out: PoE or MX-NPA-Set • 1xIN, 1xOUT
Software Features: FTP, e-mail, video alarm management, video motion, MultiView, event search
Arming • Triggering: 365 day schedule • multiple events
External Storage: Ring buffer on PC/server/NAS
Lenses: (eq. 35mm) 2 Wide-angle (43mm, F 2.0), DNight: automatic Day/Night switching
Prices: 1098 EUR



Model: M12D-Sec-D22D135
Indoor/Outdoor: In/Outdoor, weatherproof, -30...+60°C
Resolution: 2 x MEGA (1280x960 ea.), color
Pan/Tilt/Zoom: 1x, 2x, 4x • Zoom & Pan/Tilt (digital)
Frame Rate (Mono): 30 fps VGA • 30 fps CIF • 10 fps MEGA
Sensitivity: 1 lux (t=1/60sec) • 0.05 lux (t=1/1sec)
Interfaces: ISDN, Ethernet 10/100 Mbps, RS232
Video Ring Buffer: 64 MB / external up to 1 Terabyte
Audio/Telephony: Bidirectional, VoIP, IP/ISDN Telephony
Power Sup. • In/Out: PoE or MX-NPA-Set • 1xIN, 1xOUT
Software Features: FTP, e-mail, video alarm management, video motion, MultiView, event search
Arming • Triggering: 365 day schedule • multiple events
External Storage: Ring buffer on PC/server/NAS
Lenses: (eq. 35mm) Super Wide Angle (22mm, 90°, F 2.0), tele (135mm, F 2.5)
Prices: 1248 EUR



Model: M12D-Sec-DNight-D43N43
Indoor/Outdoor: In/Outdoor, weatherproof, -30...+60°C
Resolution: 2 x MEGA (1280x960 ea.), color & B/W
Pan/Tilt/Zoom: 1x, 2x, 4x • Zoom & Pan/Tilt (digital)
Frame Rate (Mono): 30 fps VGA • 30 fps CIF • 10 fps MEGA
Sensitivity: 0.1 lux (t=1/60sec) • 0.005 lux (t=1/1sec)
Interfaces: ISDN, Ethernet 10/100 Mbps, RS232
Video Ring Buffer: 64 MB / external up to 1 Terabyte
Audio/Telephony: Bidirectional, VoIP, IP/ISDN Telephony
Power Sup. • In/Out: PoE or MX-NPA-Set • 1xIN, 1xOUT
Software Features: FTP, e-mail, video alarm management, video motion, MultiView, event search
Arming • Triggering: 365 day schedule • multiple events
External Storage: Ring buffer on PC/server/NAS
Lenses: (eq. 35mm) 2 Wide-angle (43mm, F 2.0), DNight: automatic Day/Night switching
Prices: 1248 EUR



Model: M12D-Sec-DNight-D22N22
Indoor/Outdoor: In/Outdoor, weatherproof, -30...+60°C
Resolution: 2 x MEGA (1280x960 ea.), color & B/W
Pan/Tilt/Zoom: 1x, 2x, 4x • Zoom & Pan/Tilt (digital)
Frame Rate (Mono): 30 fps VGA • 30 fps CIF • 10 fps MEGA
Sensitivity: 0.1 lux (t=1/60sec) • 0.005 lux (t=1/1sec)
Interfaces: ISDN, Ethernet 10/100 Mbps, RS232
Video Ring Buffer: 64 MB / external up to 1 Terabyte
Audio/Telephony: Bidirectional, VoIP, IP/ISDN Telephony
Power Sup. • In/Out: PoE or MX-NPA-Set • 1xIN, 1xOUT
Software Features: FTP, e-mail, video alarm management, video motion, MultiView, event search
Arming • Triggering: 365 day schedule • multiple events
External Storage: Ring buffer on PC/server/NAS
Lenses: (eq. 35mm) 2 Super Wide Angle (22mm, 90°, F 2.0), DNight: automatic Day/Night switching
Prices: 1348 EUR



Model: SecureFlex-Wall-/Ceiling Mount
Indoor/Outdoor: In/Outdoor, weatherproof, -30...+60°C
Resolution: N/A
Pan/Tilt/Zoom: N/A
Frame Rate (Mono): N/A
Sensitivity: N/A
Interfaces: N/A
Video Ring Buffer: N/A
Audio/Telephony: N/A
Power Sup. • In/Out: N/A
Software Features: N/A
Arming • Triggering: N/A
External Storage: N/A
Lenses: (eq. 35mm) N/A
Prices: 48 EUR incl. screws & dowels



Model: M12/M22-Pole Mount
Indoor/Outdoor: In/Outdoor, weatherproof, -30...+60°C
Resolution: N/A
Pan/Tilt/Zoom: N/A
Frame Rate (Mono): N/A
Sensitivity: N/A
Interfaces: N/A
Video Ring Buffer: N/A
Audio/Telephony: N/A
Power Sup. • In/Out: N/A
Software Features: N/A
Arming • Triggering: N/A
External Storage: N/A
Lenses: (eq. 35mm) N/A
Prices: 78 EUR



Model: Cam-IO-Installation Box IP65
Indoor/Outdoor: In/Outdoor, weatherproof, -30...+60°C
Resolution: N/A
Pan/Tilt/Zoom: N/A
Frame Rate (Mono): N/A
Sensitivity: N/A
Interfaces: N/A
Video Ring Buffer: N/A
Audio/Telephony: N/A
Power Sup. • In/Out: N/A
Software Features: N/A
Arming • Triggering: N/A
External Storage: N/A
Lenses: (eq. 35mm) N/A
Prices: Available Q3/2007

- MOBOTIX product advantages**
- High resolution with 960 lines in live and recorded image
 - Minimal Network load
 - View live 30 fps and record up to 40 cameras simultaneously, incl. audio, on a single PC
 - Unlimited scalability
 - Weatherproof, -30 to +60 C
 - PoE Standard IEEE 802.3af
 - Cost efficient - less cameras required, low power, low maintenance
 - Increased functionality with Cam-IO
 - Integrated alarm notification
 - Backlight correction
 - Two-way audio
 - Lip-synchronised audio
 - SD-Card extension*
 - WLAN enhancement with CF-Cards*
 - Free of charge software updates via MOBOTIX website

Offer not binding • Changes reserved • Replaces all previous price lists • Prices may vary in different countries

* available end of 2007

MOBOTIX HiRes IP Cameras 2



... the new face of IP video

NEW
D22 FixDome



Model: **D22Mi-Basic-D22**
Indoor/Outdoor: Indoor, IP54, -30..+50°C
Resolution: VGA (640x480 pixels), color
Pan/Tilt/Zoom: ./.
Frame Rate (Mono): 16 fps VGA • 16 fps CIF
Sensitivity: 1 lux (t=1/60sec) • 0.05 lux (t=1/1sec)
Interfaces: Ethernet 10/100 Mbps
Video Ring Buffer: 2 MB
Audio/Telephony: ./.
Power Sup. • In/Out: PoE or MX30V • N/A
Software Features: FTP, e-mail, video alarm management, video motion, MultiView, event search
Arming • Triggering: ./.
External Storage: ./.
Lenses: (eq. 35mm) Super Wide-Angle (22mm, 90°, F 2.0)

Prices: 448 EUR



Model: **D22M-IT-D22**
Indoor/Outdoor: In/Outdoor, IP65 weatherpr., -30..+60°C
Resolution: VGA (640x480 pixels), color
Pan/Tilt/Zoom: ./.
Frame Rate (Mono): **30 fps VGA** • 30 fps CIF
Sensitivity: 1 lux (t=1/60sec) • 0.05 lux (t=1/1sec)
Interfaces: Ethernet 10/100 Mbps, USB, ext. audio
Video Ring Buffer: 32 MB/up to 1 Terabyte externally
Audio/Telephony: Bidirectional, VoIP, IP Telephony
Power Sup. • In/Out: PoE or MX30V • Via Mini USB
Software Features: FTP, e-mail, video alarm management, video motion, MultiView, event search
Arming • Triggering: Annual time table • Event logic
External Storage: Ring buffer on PC/server/NAS
Lenses: (eq. 35mm) Super Wide-Angle (22mm, 90°, F 2.0)

Prices: 548 EUR



Model: **D22M-IT-Night-N22**
Indoor/Outdoor: In/Outdoor, IP65 weatherpr., -30..+60°C
Resolution: VGA (640x480 pixels), **BW**
Pan/Tilt/Zoom: ./.
Frame Rate (Mono): **30 fps VGA** • 30 fps CIF
Sensitivity: 0.1 lux (t=1/60sec) • 0.005 lux (t=1/1sec)
Interfaces: Ethernet 10/100 Mbps, USB, ext. audio
Video Ring Buffer: 32 MB/up to 1 Terabyte externally
Audio/Telephony: Bidirectional, VoIP, IP Telephony
Power Sup. • In/Out: PoE or MX30V • Via Mini USB
Software Features: FTP, e-mail, video alarm management, video motion, MultiView, event search
Arming • Triggering: Annual time table • Event logic
External Storage: Ring buffer on PC/server/NAS
Lenses: (eq. 35mm) Super Wide-Angle (22mm, 90°, F 2.0)

Prices: 548 EUR



Model: **D22M-Sec**
Indoor/Outdoor: In/Outdoor, IP65 weatherpr., -30..+60°C
Resolution: **MEGA** (1280x960 pixels), color
Pan/Tilt/Zoom: 1x, 2x, 4x • Zoom & Pan/Tilt (digital)
Frame Rate (Mono): **30 fps VGA** • 30 fps CIF • 10 fps Mega
Sensitivity: 1 lux (t=1/60sec) • 0.05 lux (t=1/1sec)
Interfaces: Ethernet 10/100 Mbps, USB, ext. audio
Video Ring Buffer: 64 MB/up to 1 Terabyte externally
Audio/Telephony: Bidirectional, VoIP, IP Telephony
Power Sup. • In/Out: PoE or MX30V • Via Mini USB
Software Features: FTP, e-mail, video alarm management, video motion, MultiView, event search
Arming • Triggering: Annual time table • Event logic
External Storage: Ring buffer on PC/server/NAS
Lenses: (eq. 35mm) Super Wide-Angle (22mm, 90°, F 2.0), 32mm, 43mm, 65mm, 135mm

Prices: 748 EUR



Model: **D22M-Sec-Night**
Indoor/Outdoor: In/Outdoor, IP65 weatherpr., -30..+60°C
Resolution: **MEGA** (1280x960 pixels), **BW**
Pan/Tilt/Zoom: 1x, 2x, 4x • Zoom & Pan/Tilt (digital)
Frame Rate (Mono): **30 fps VGA** • 30 fps CIF • 10 fps Mega
Sensitivity: 0.1 lux (t=1/60sec) • 0.005 lux (t=1/1sec)
Interfaces: Ethernet 10/100 Mbps, USB, ext. audio
Video Ring Buffer: 64 MB/up to 1 Terabyte externally
Audio/Telephony: Bidirectional, VoIP, IP Telephony
Power Sup. • In/Out: PoE or MX30V • Via Mini USB
Software Features: FTP, e-mail, video alarm management, video motion, MultiView, event search
Arming • Triggering: Annual time table • Event logic
External Storage: Ring buffer on PC/server/NAS
Lenses: (eq. 35mm) Super Wide-Angle (22mm, 90°, F 2.0), 32mm, 43mm, 65mm, 135mm

Prices: 748 EUR

MOBOTIX Cost Benefits

- Increased resolution reduces amount of cameras needed
- Reduced installation costs
- Intelligent recording technology reduces required storage
- Event-controlled image rate minimizes storage costs
- No additional power (standard PoE) and no heating required
- Backup power requirement reduced by 8 times
- Robust and practically maintenance free
- No software and no license costs
- Unlimited scalability and high return of investment
- Additional functions and other extras included

L22 Super Wide Angle (90° x 67°)



L32 Wide Angle (60° x 45°)



L43 Wide Angle (45° x 34°)



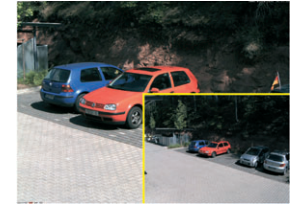
L65 Tele (31° x 23°)



L135 Tele (15° x 11°)



V24-54 CSVario*



Lenses 1/2", M14 lens distortion can be removed using MxControl/Center (Images from an M22M)

* M22M special order

MOBOTIX accessories for D22 IT/SECURE models (see other products in the price list)



Part Name: **D22 Vandalism Set**
Description:

- Reinforced dome (3mm Polyc.)
- Stainless steel vandalism ring (matt, polished or white, silver, black powder-coated)

Prices: 98 EUR



Part Name: **D22 On-Wall Set**
Description:

- On-wall mount incl. mounting parts
- Concealed cabling
- Ø 165x37mm/6.5x1.5in

Prices: 98 EUR



Part Name: **D22 In-Ceiling Set**
Description:

- In-ceiling set incl. mounting parts
- Easy mounting from front
- Ø 150mm/5.9in diameter

Prices: 98 EUR



Part Name: **D22 Wall Mount (MX-WH)**
Description:

- Weather protection (IP65) for D22
- Covers RJ45 wall outlets
- Space for expansion modules (WiFi)

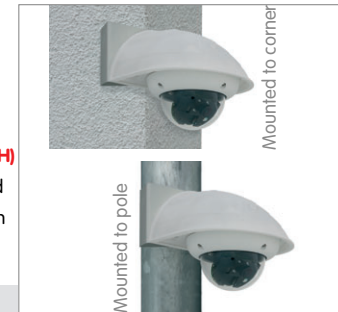
Prices: 98 EUR (WH +MH 168 EUR Bundle)



Part Name: **D22 Corner and Pole Mount (MX-MH)**
Description:

- 3mm stainless steel, powder-coated
- Pole diam.: 60 to 180mm/2.4 to 7.1in
- Incl. mounting supplies

Prices: 98 EUR (WH + MH 168 EUR Bundle)



Offer not binding • Changes reserved • Replaces all previous price lists • Prices may vary in different countries

MOBOTIX HiRes IP Cameras 3



... the new face of IP video



Model: **D12Di-IT**
Indoor/Outdoor: Dual lens Indoor, IP54, -30...+60°C
Resolution: 2 x VGA (640x480 ea.), **color or B/W**
Pan/Tilt/Zoom: N/A
Frame Rate (Mono): **30 fps VGA** • 30 fps CIF
Sensitivity: 1 lux (t=1/60sec) • 0.05 lux (t=1/1sec)
Interfaces: ISDN, Ethernet 10/100 Mbps, RS232
Video Ring Buffer: 32 MB / external up to 1 Terabyte
Audio/Telephony: Bidirectional, VoIP, IP/ISDN Telephony
Power Sup. • In/Out: PoE or MX-NPA-Set • 1xIN, 1xOUT
Software Features: FTP, e-mail, video alarm management, video motion, MultiView, event search
Arming • Triggering: 365 day schedule • multiple events
External Storage: Ring buffer on PC/server/NAS
Lenses: (eq. 35mm) Multiple lens combinations or 180° Panorama: 2 x Super Wide Angle
Prices: 998 EUR



Model: **D12Di-Sec**
Indoor/Outdoor: Dual lens Indoor, IP54, -30...+60°C
Resolution: **2 x MEGA** (1280x960 ea.), **color or B/W**
Pan/Tilt/Zoom: 1x, 2x, 4x • Zoom & Pan/Tilt (digital)
Frame Rate (Mono): **30 fps VGA** • 30 fps CIF • 10 fps MEGA
Sensitivity: 1 lux (t=1/60sec) • 0.05 lux (t=1/1sec)
Interfaces: ISDN, Ethernet 10/100 Mbps, RS232
Video Ring Buffer: 64 MB / external up to 1 Terabyte
Audio/Telephony: Bidirectional, VoIP, IP/ISDN Telephony
Power Sup. • In/Out: PoE or MX-NPA-Set • 1xIN, 1xOUT
Software Features: FTP, e-mail, video alarm management, video motion, MultiView, event search
Arming • Triggering: 365 day schedule • multiple events
External Storage: Ring buffer on PC/server/NAS
Lenses: (eq. 35mm) Multiple lens combinations or 180° Panorama: 2 x Super Wide Angle
Prices: 1248 EUR



Model: **D12-Wall Mount (MX-WH)**
Indoor/Outdoor: Weatherproof (IP65) for D12D-Dome
Resolution: Robust and UV resistant PBT-30GF
Pan/Tilt/Zoom: concealed cabling
Frame Rate (Mono): covers RJ45 wall plate connection
Sensitivity: possible to fit WLAN or GSM/GPRS equipment inside housing
Interfaces:
Video Ring Buffer:
Audio/Telephony:
Power Sup. • In/Out:
Software Features:
Arming • Triggering:
External Storage:
Lenses: (eq. 35mm)
Prices: 148 EUR (WH + MH 198 EUR Bundle)



Model: **D12-Pole Mount (MX-MH)**
Indoor/Outdoor: To be used with MX-WH-Dome-WM
Resolution: 3mm stainless steel, white
Pan/Tilt/Zoom: can be mounted to 90° corner
Frame Rate (Mono): Mast circumference 60 to 180mm
Sensitivity: 2 x metal mounting bands, fittings and grommet included
Interfaces:
Video Ring Buffer:
Audio/Telephony:
Power Sup. • In/Out:
Software Features:
Arming • Triggering:
External Storage:
Lenses: (eq. 35mm)
Prices: 98 EUR (WH + MH 198 EUR Bundle)



Lens options	D22	N22	D32	N32	D43	N43	D65	N65	D135	N135
M22M-IT-D22	•		•		•		•		•	
M22M-Sec	•		•		•		•		•	
M22M-Sec-Night		•		•		•		•		•
M12M-Web-D43					•					
M12D-IT-DNight-D43N43					•	•				
M12D-Sec-D22D135	•								•	
M12D-Sec-DNight-D22N22	•	•								
M12D-Sec-DNight-D43N43					•	•				
D12Di-IT/D12Di-Sec	•	•	•	•	•	•	•	•	•	•
D22Mi-Basic-D22	•		•		•		•		•	
D22M-IT-D22	•		•		•		•		•	
D22M-IT-Night-N22		•		•		•		•		•
D22M-Sec	•		•		•		•		•	
D22M-Sec-Night		•		•		•		•		•

• Standard • Option, D (Day), N (Night)

L22 Super Wide Angle (90° x 67°)



Lenses 1/2", M14 lens distortion can be removed using MxControlCenter (Images from an M22M)

L32 Wide Angle (60° x 45°)



L43 Wide Angle (45° x 34°)



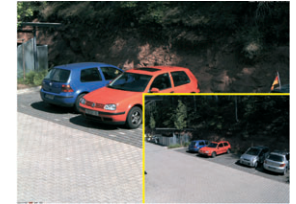
L65 Tele (31° x 23°)



L135 Tele (15° x 11°)



V24-54 CSVario*



* M22M special order

MOBOTIX Accessories (MOBOTIX systems have several alternative power supply options, these options are priced and should be ordered separately)



Part Name: **Network Power Adapter Set**
Description: Power supply via network cabling
 All camera models (MX30V)



Part Name: **Network Power Box for 4 cameras**
Description: Power supply for DIN rails
 All camera models (MX30V)



Part Name: **Network Power Rack (8 cameras)**
Description: Power supply via network cabling
 All camera models (MX30V)



Part Name: **Network Power Rack (20 cameras)**
Description: Power supply via network cabling
 All camera models (MX30V)



Part Name: **MX-SW-NFS-Server 2.0**
Description: Using the MOBOTIX NFS CD you can turn almost any PC into a Linux Server incl. timeserver in under 10 minutes



Part Name: **MxControlCenter for Windows Client:**
Description: High performance with 30 smooth video streams live/stored, integration of analog and digital PTZ cameras with joystick control, alarm management, event search

Prices: 98 EUR Bundle

398 EUR

948 EUR

1498 EUR

Available November 2007

free Download (mobotix.com)

Offer not binding • Changes reserved • Replaces all previous price lists • Prices may vary in different countries