

The screenshot shows the PMIX35 Network Analyzer Validator interface. The 'Validation Results' section displays a table of measurement data for various modules. The 'User Data' section contains a form for location information and a 'Start Validation' button. Red dashed boxes and numbered circles (1-8) highlight specific steps in the validation process.

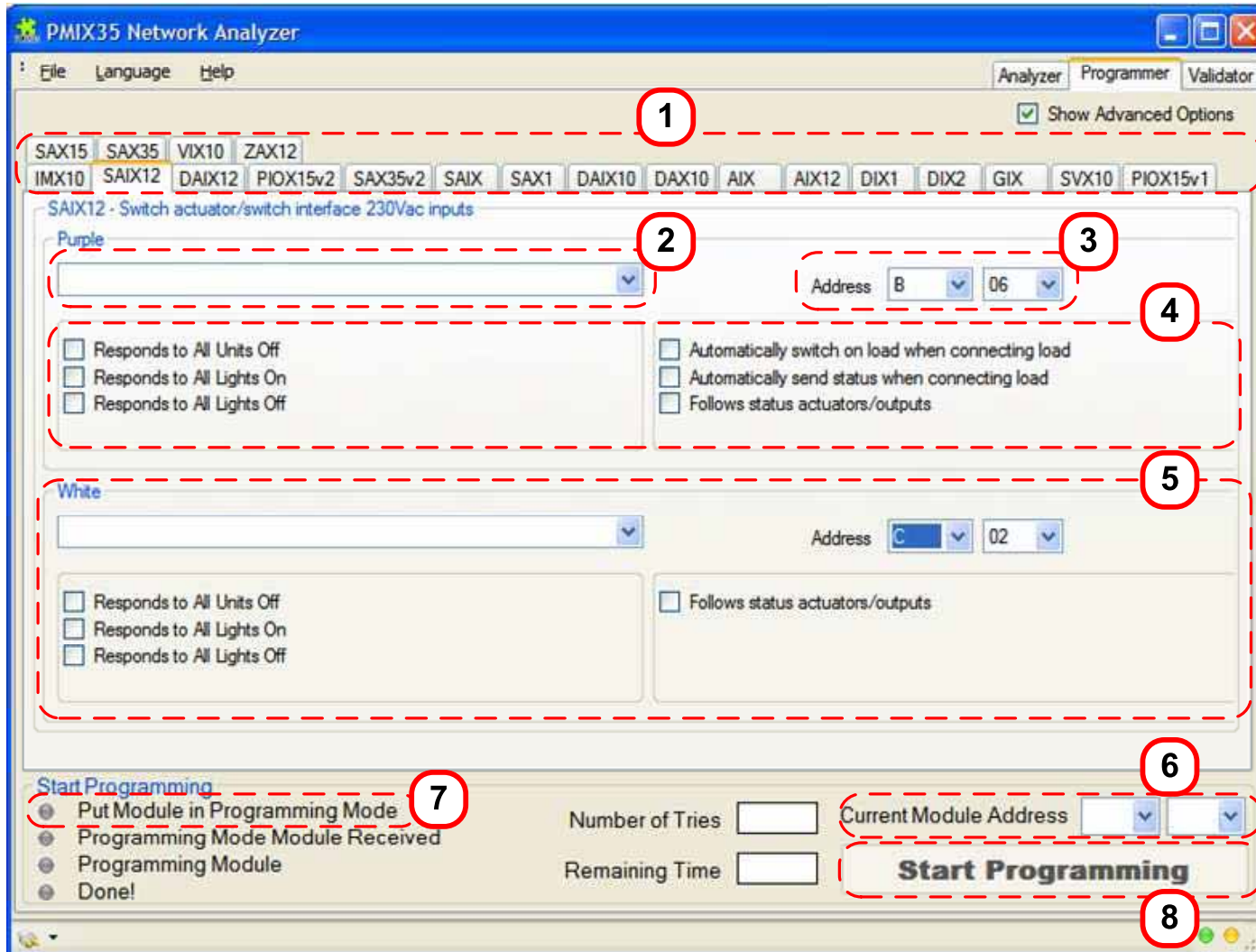
Module	Tx OFF	Tx ON	Min Lvl	Max Lvl	Noise	Imp	Result
A02	3124		983	2415	57	4.6	Check
A03	2662	2703	659	698	52	4.6	Passed
A04	2691	2663	2272	2314	62	4.6	Passed
A05	1779	2701	6444	6572	59	4.6	Passed
A06	2695	3141	3224	3329	56	4.6	Check
A07	2694	4174	2567	4698	54	4.6	Check
A08	2693	2690	646	987	47	4.6	Passed
A09	2688	2691	2355	2396	47	4.6	Passed
A10							Not Found
A11							Not Found
A12	2653	2690	703	738	51	4.6	Passed
A13							Not Found
A14							Not Found
A15							Not Found
A16							Not Found
B01	2668	2715	3011	3099	67	4.6	Passed
B02	2697	2706	695	744	58	4.6	Passed
B03	2695	2696	692	734	59	4.6	Passed
B04	2652	2661	694	741	64	4.6	Passed
B05	2705	2663	693	738	40	4.6	Passed
B06	2644	2698	619	669	42	4.6	Passed
B07	2480	2699	541	595	41	4.6	Passed
B08	2651	2690	319	348	42	4.6	Passed
B09							Not Found
B10							Not Found
B11							Not Found
B12							Not Found
B13							Not Found
B14							Not Found
B15							Not Found
B16							Not Found

Installation Validation steps:

- 1 Fill out location information
- 2 Select all the used Lettercodes
- 3 Select "Start Validation"
- 4 *Wait until all the addresses are measured and check the results
- 5 *Use the Analyzer to solve issues in case of result Check and Failed and start new validation. This process takes several minutes
- 6 Check end result
- 7 Select "Stop Validation"
- 8 Save the report

* Remarks:

- **Step 4:** Only modules supporting the Status Request can be measured automatically, all other modules must be switched On and Off manually during the validation run.
- **Step 5:** Read the manual to solve network issues.



Module Programming steps:

- 1 Select Module type
- 2 Only for IMX10, SAIX12, DAIX12:
Select Input Function for this wire
- 3 Select Address(es) (or Repeat Lettercodes for SVX10)
- 4 Select available Module options
For additional options enable the "Show Advanced Options" checkbox
- 5 Only for IMX10, SAIX12:
Repeat step 2 – 4 for each input
- 6 Select "Current Module Address" if requested and go to step 8
- 7 Put Module in Programming Mode
- 8 Select "Start Programming"
If the "Current Module Address" is requested follow the "Put Module in Programming Mode" instructions below

"Put Module in Programming Mode" instructions (In case the "Current Module Address" is requested, step 6):

- **IMX10, PIOX15v2, SAX35v2:** Switch 4 times one of the inputs or push 3 seconds the programming switch
- **SAIX12, DAIX12:** Switch 4 times one of the inputs or the output load or push 3 seconds the programming switch
- **SVX10v2:** Push 3 seconds the programming switch

Macro fields:

Send data entered in the "Command Line" fields manually or automatically. See also "Sending Addresses and Commands". Previously entered data will be available in the dropdown box.

- Send manually
- Send automatically
- Open Macro file
- Save Macro file

Sending Addresses and Commands:

Send Addresses and Commands directly or "Add to Command Line" (See Macro fields) in case this checkbox is checked.

Network Diagnostics:

- Repeater detected:** Indicates the presence of a Repeater or Coupler if the Signal Level of the Second Data package is more than 0.5V then the First Data package.
- Module noise detected:** Indicates defect capacitor in module.
- Lost command detected:** Indicates Suspicious Data received and logged (See "Received Signal Data").
- < 200mV:** Indicates signals received lower then 200mV.
- < 100mV:** Indicates signals received lower then 100mV.
- Impedance drop:** Indicates impedance change of more then 1.5Ω.

Reset Diagnostics indicators

Counters:

Count values of received and transmitted data.

Reset counters to zero

Transmit options:

Set the Transmit Level between 0 – 5V and select the transmit position (Normal: 0°).

Help information:

Shows help information during mouse over on all items.

Received Signal Data:

Data1: First data package with Signal (Lv11) and Noise (Ns1) Level.

Data2: Second data package with Signal (Lv12) and Noise (Ns2) Level.

- 12:11:50 _A01 Received Data Clear the log window
- 12:11:48 _A01 Transmitted Data Set logfile name/location
- 12:11:32 _AOFF Suspicious Data

Received Signal levels:

Last received Voltage: Second received data package. A higher voltage level (0.5V) then the first received data package indicates the presence of a Repeater or Coupler in the network.

Second last Voltage: First received data package represents always the Module signal. Levels: > 400mV: Good, 200mV – 400mV: Acceptable, < 200mV: Filter needed, < 100mV: **Not** acceptable.

Noise: Measured Noise level on the power lines.

Network Impedance: Measured impedance of the power lines. Lower impedance means lower data signals.