

# HomeSeer HS3 Quick-Start Guide

---

Welcome to HomeSeer's newest installment of our Home Automation Software! HS3 provides a new interface, a more efficient application, a brand new and more robust event engine, and many newly added features that only HS3 can provide you! Here is a guide to get you started. For any further assistance please refer to the online help files.

## STEP #1 – HS3 Initial Setup

To begin using HS3 you will need to download and install the application.



### HS3 Installation/Setup

- a) Download HS3 from [www.homeseer.com/downloads](http://www.homeseer.com/downloads).
- b) Once the download has finished, run the file.
- c) You will now be prompted to click next and more than likely install *Microsoft .Net Framework ver. 4.0*. Let that install. Once finished proceed with the installation of HS3.
- d) Once HS3 is finished, restart your computer. (If you want HS3 to boot up upon the start-up of your computer, copy the HS3 application shortcut to your Startup folder in your Start Menu.
- e) Once the computer has restarted you can now start HomeSeer.
- f) To access HomeSeer from another computer use [find.homeseer.com](http://find.homeseer.com) to locate HS3 on your network. Otherwise, HS3 will automatically show the web interface once startup is complete.



### Changing the Username and Password

The default username is: *default* and the default password is: *default*. It is highly recommended that you change the username and password to something more secure. Please make sure to save this information.

- a) Go to the Tools menu and click Setup.
- b) Click on the Network tab at the top and you will see a list under Web User Settings.
- c) Enter a User Name and Password in to the respected fields and then choose the User Rights.
- d) Click Add User once all fields have been completed. Click Delete to remove a User.

### Updating HS3

Be sure to check for updates and install any that are available. To do this, follow these steps:

- a) HomeSeer will automatically check for updates when you start HS3.
- b) You can either restart your HomeTroller or just restart HS3.
- c) HomeSeer must be shut down once the update procedure is initiated.

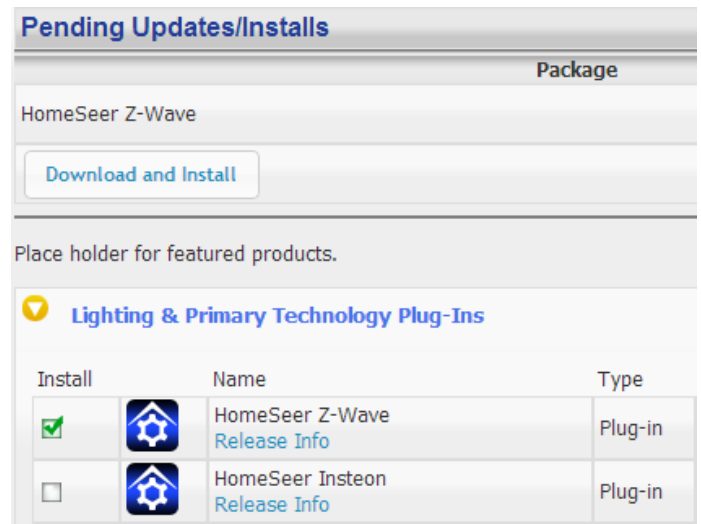
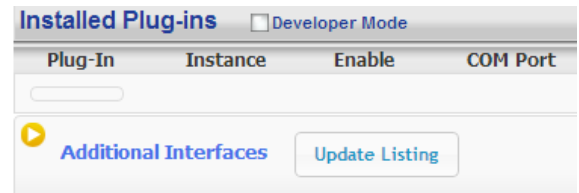
### Setting the Time Zone

The Time Zone is based on the Date/Time Settings on the computer that HS3 is installed on. For the HomeTroller Zee you can go to Tools->Setup->General and change the Time Zone.

## STEP #2 – Installing Plug-ins

HomeSeer works with many different protocols. All of these protocols require a plug-in to be installed. There are HomeSeer Tech plug-ins and many 3<sup>rd</sup> Party plug-ins. Please follow the instructions below on installing a plug-in or you can [click here](#) to watch a video tutorial.

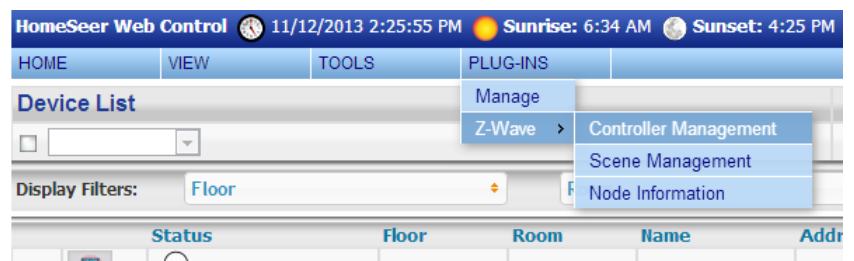
1. Locate the Plug-Ins drop down at the top of the screen. With that dropdown click *Manage*.
2. Click the yellow circle to right of the *Additional Interfaces*. This will present you with a list of categories. Each category has a list of plug-ins that can be installed.
3. Click on the circle next to the category that you wish to expand.
4. Once you see the list of plug-ins, click the check box to the left of the plug-ins that you want to install. (You may check more than one at a time.)
5. After you have selected the plug-ins you wish to install, a *Download and Install* button will appear. Click this button to proceed with the install.
6. You will be given a progress bar under the *Installed Plug-ins* section indicating the status of the install.
7. You must now *Enable* your plug-ins to use them. Once they are enabled they will be available to configure. Some plug-ins will require you to enter a COM port before going into the configuration pages.
8. To get to the configuration pages, go back to the top where the plug-ins menu is and you will see a list of your installed plug-ins. Within each plug-in there is another menu that has a link to the configuration pages.



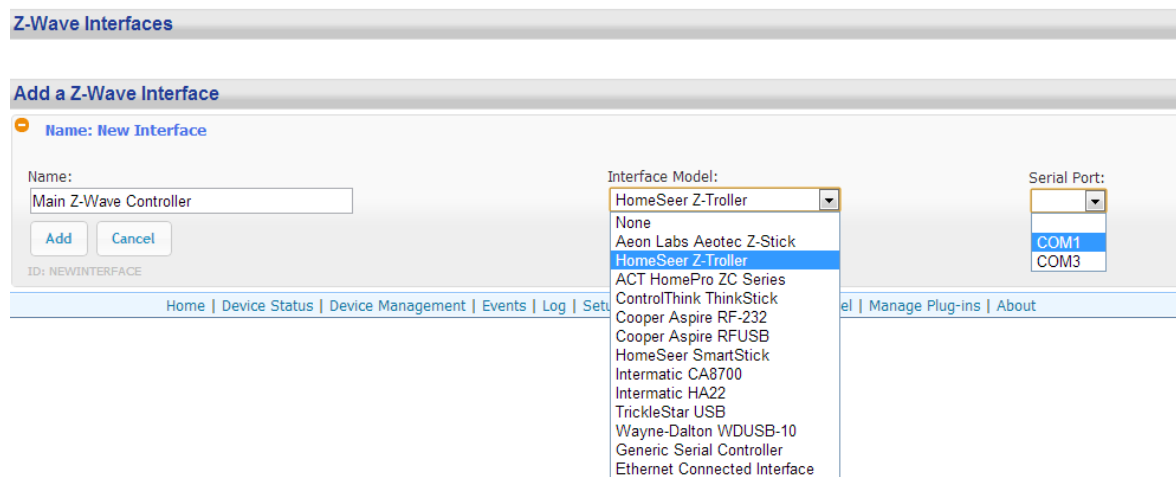
## STEP #3 – Adding a Z-Wave Controller

In order to control Z-Wave devices, such as light switches, thermostats, door locks and sensors, they must be included into a Z-Wave “network”. Follow the steps below to add your Z-Wave controller and create a Z-Wave network. For a more visual walkthrough, [click here](#).

- a) Go to the Plug-ins drop down menu and hover over Z-Wave. Select Controller Management.
- b) Click the Add Interface button to begin the management process.
- c) You will now be prompted to add an interface name, interface type, and the COM port of the interface. A good naming scheme is either the name of the interface you are using or the location of your Z-Wave controller (if you have multiple). The interface type corresponds to the type of Z-Wave controller you are using. If you have using an IP2SL/WF2SL, select the Ethernet option.
- d) Go ahead and click *Add* and let HomeSeer initialize the unit. Once initialized, you will be brought to a new screen.
- e) You must now enable the controller. Click the red circle with a line through it (“No symbol”) to enable it. You will see a green checkmark if the interface enabled correctly.



f) To add another Z-Wave interface simply follow these instructions again.



## STEP #4 – Add/Remove Z-Wave Devices

In order to control Z-Wave devices, such as light switches, thermostats, door locks and sensors, they must be included into a Z-Wave “network”. Follow the steps below to create your Z-Wave network and to include devices. *Note: the steps below assume you’ve already physically installed Z-Wave devices in your home.*

**Via Z-Tool+** (requires HS3 version 3.0.0.194 and Z-Wave version 3.0.1.23)

To begin using Z-Tool+, the app must be downloaded from within your App Store. Open either the Play Store, iTunes Store, or Windows Store and search for ‘Z-Tool+’. The search will return the app and then just click Install. [Click here](#) for a more comprehensive guide to using Z-Tool+.

- Z-Tool+ will automatically find your system(s). Click Select a System if you have more than one local system.
- Select the Add or Remove action you wish you complete.
- Activate the network button (or button sequence) on your Z-Wave device and observe the inclusion process in the log window. Once removed a confirmation will show in the log.
- Once the Add process is finished a window will pop up to name and change the location attributes of the device.
- Your device can now be controlled via HSTouch or HS3 Web Control.

## Via Web Control Page

**Adding Z-Wave Devices** (wall switches, receptacles, plug-in modules, sensors, door locks, etc)

- From the web interface, use the pull down menus to navigate to the Z-Wave Controller Management page (PLUG-INS > Z-Wave > Controller Management).
- Locate the “Z-Wave Interfaces” area and expand your Z-Wave Controller section. Open the “Actions:” menu and choose “Add/Include a Node”.
- Click the ‘Start’ button below the Actions menu. Your HomeTroller is now in inclusion mode and is ready to communicate with your device.
- Activate the network button (or button sequence) on your device and observe the inclusion process in the green log window. When done, you’ll receive an acknowledgement such as “Finished.”. Your Z-Wave device is now removed from your Z-Wave network!

Battery operated devices should be right next to the Z-Wave controller when adding. Door Locks should be no more than 10 feet away when being added and should be removed first.

## Removing Z-Wave Devices

Follow the procedure below to (a) reset the device to its factory settings or (b) remove the device from your Z-Wave interface.

- From the web interface, use the pull down menus to navigate to the Z-Wave Controller Management page (PLUG-INS > Z-Wave > Controller Management).
- Locate the “Z-Wave Interfaces” area and expand your Z-Wave Controller section. Open the “Actions:” menu and choose “Remove/Exclude a Node”.
- Click the ‘Start’ button below the Actions menu. Your HomeTroller is now in inclusion mode and is ready to communicate with your device.
- Activate the network button (or button sequence) on your device and observe the adding process in the green log window. When done, you’ll receive an acknowledgement such as “DONE - Remove Node Operation is Complete.” Your Z-Wave device is now removed from your Z-Wave network!

## STEP #5 – Importing, Editing and Controlling Your Z-Wave Devices

Importing devices is only necessary if you are using the Aeon Labs Z-Stick to configure your Z-Wave network, otherwise that step can be skipped. You’ll need to import that network into your HomeTroller, so that your devices can be monitored and controlled. Here’s how to do that:

### Importing Z-Wave Devices

- From the web interface, use the pull down menus to navigate to the Z-Wave Controller Management page (PLUG-INS > Z-Wave > Controller Management).
- Locate the “Z-Wave Interfaces” area and expand the section of your Z-Wave Controller. Open the “Actions:” menu and choose “Import Node Info from Controller and Scan Devices”.
- Click the ‘Start’ button below the Actions menu. Your HomeTroller will now import your device information from the Z-Stick. When done, you’ll receive an acknowledgement such as “Finished with Z-Wave device synchronization”. Your Z-Wave devices may now be monitored and controlled from the HomeTroller!

### Editing and Controlling Your Z-Wave devices

- From the web interface, use the pull down menus to navigate to the Device Management Page (VIEW > Device Management). Click the “Show All” button in the upper right hand area of the page. A list of all your devices will now be displayed.
- To edit the name, location and other properties of any device, click the [Name](#).
- To control the device, use the buttons in the Control column.

Status	Category	Room	Name	Address	Type	Last Change	Control	
<input type="checkbox"/>	 No Status	Lighting	Kitchen	<a href="#">Motion Sensor Root</a>	003D46CA-034	Z-Wave On/Off Sensor Root Device	Never_Set	
<input type="checkbox"/>	 100%	Lighting	Kitchen	<a href="#">Motion Sensor Battery</a>	003D46CA-034-Q38	Z-Wave Battery	9/5/2013 5:18:28 PM	
<input type="checkbox"/>	 No Motion	Lighting	Kitchen	<a href="#">Motion Sensor</a>	003D46CA-034-Q39	Z-Wave Sensor Binary	9/6/2013 5:58:33 PM	
<input type="checkbox"/>	 On	Lighting	Kitchen	<a href="#">Pannini Maker</a>	003D46CA-036	Z-Wave Switch Binary	9/5/2013 8:56:48 AM	<input type="button" value="Off"/> <input type="button" value="On"/>
<input type="checkbox"/>	 On	Lighting	Kitchen	<a href="#">Light-Overhead</a>	003D46CA-014	Z-Wave Switch Binary	Today 8:37:32 AM	<input type="button" value="Off"/> <input type="button" value="On"/>

## STEP #6 – Creating Automation Events

Simply put, an automation event consists of an action (or actions) that are set into motion by one or more triggers. Example: Turning on lights at sunset. Trigger = sunset, Action = turning lights on. With HomeSeer, you can quickly and easily create all the events you need. Here’s how to create the sunset event above:

## Creating Events

- From the web interface, use the pull down menus to navigate to the Events page (VIEW > Events).
- Change the event group name from “New Group” to “Lighting”.
- Now expand the “New Event” section and rename the new event to “Lights on at Sunset”
- In the shaded blue “Trigger” section, choose “The Time Is...” and then select “The Time is Sunset”
- If the shaded green “Actions” section, choose “Control a Device” and then select the device you wish to control and the method of control (on / off) you wish to use. The resulting event will look like this:



## STEP #7 – HSTouch Server Setup

After you have successfully connected to your Wi-Fi network, you will need to make sure HSTouch Server is properly set up before connecting the client to your HomeSeer system. Follow the instructions below to set up HSTouch Server.

- Go to the Plug-in’s menu within your HomeSeer Web Control and click on *Manage*.
- If HSTouch Server is not installed follow these steps, otherwise skip to **step f**
- Click on *Additional Interfaces* to expand the plug-in updater.
- Scroll down to *User Interfaces* and expand it. Check the box next to *HomeSeer HSTouch Server*.
- Scroll back up and click on *Download and Install*.
- Now that HSTouch Server is installed you will need to enable it. Underneath the Enable column click on the red toggle. It should become green with a check mark in it.

Plug-In	Instance	Enable	COM Port	Version	Update	License
HSTouch Server			N/A	3.0.0.20	N/A	Licensed
Z-Wave			N/A	3.0.0.88	N/A	Licensed

- HSTouch Server is now enabled. You can now go into HSTouch on your device to configure HSTouch.

## Setting Up IP Cameras

For setting up an IP Camera within HS3, follow the instructions below. Note that all Foscam IP Netcams will be automatically detected by HS3 whereas other cameras will not.

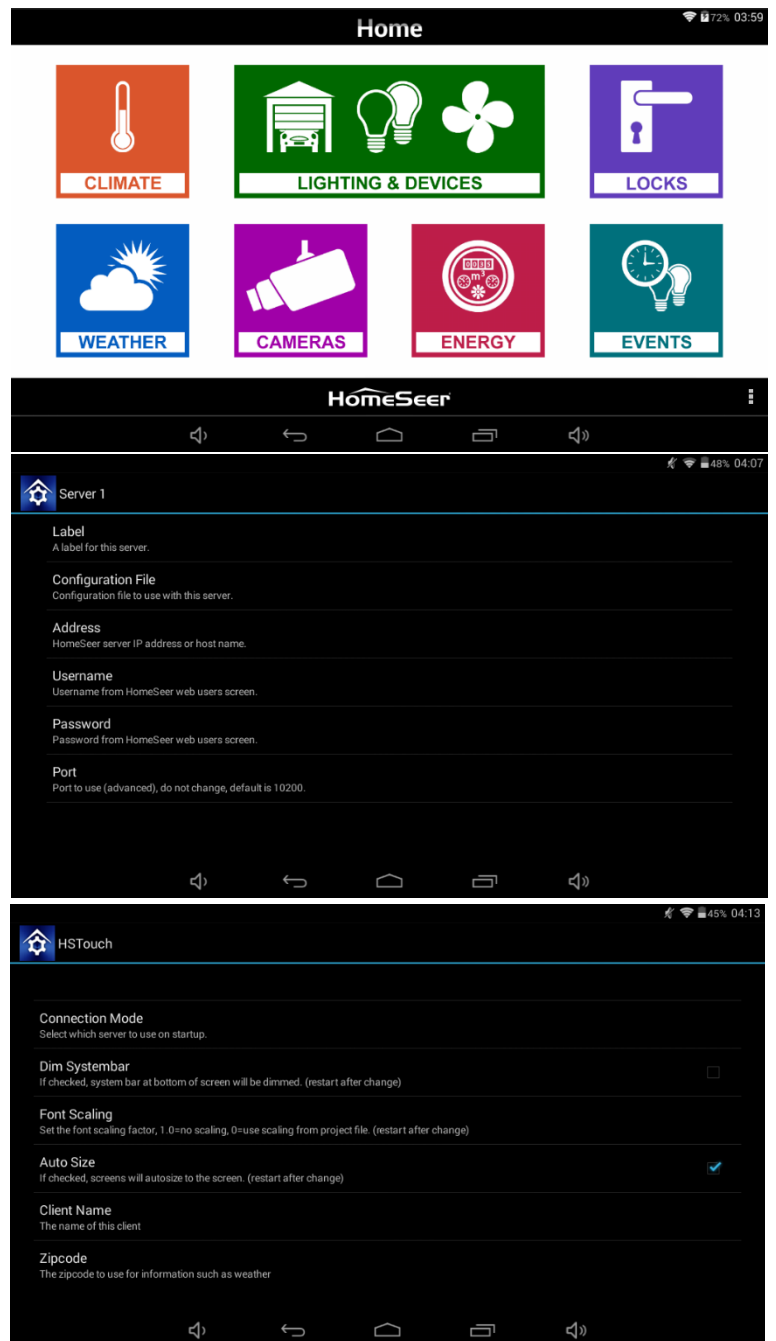
- Now that HStouch is enabled you should be able to go to Plug-ins->HSTouch Server->HSTouch.
- At the bottom you will see an IP Camera section. All Foscam cameras will automatically show up here. You will need to enter the username and password for each camera.
- For other branded cameras click the Green Plus to add a camera.
- Here you can name the camera, add the snapshot url (this will include the username and password), and then set up pan/tilt controls.

## STEP #8 – HSTouch Client Setup

Here you will configure your settings and connect to your HomeSeer system to allow for control from your device. Follow the instructions below to set up the HSTouch Client. To configure these settings on iOS, go to the Settings app and scroll down to HSTouch and proceed with **step b**.



- a) HSTouch will prompt you to select a server or settings. Click settings. *(The first launch will require an initial setup.)* A menu on the bottom right will pop up. Click Settings again. *(This menu can also be used to switch between servers, go to settings, or exit the app.)*
- b) Within the settings you are given multiple options. Servers 1-4 allow you to configure each server for different locations.
- c) Select the server you would like to have as your Home setup.
- d) Configure a Label for that HomeSeer system. Click *Address* to enter the IP Address or Domain of the HomeSeer System.
- e) Now that you have set up the connection address, go ahead and enter in your Username and Password for that server. **There is no need to change the port.**
- f) You can follow steps **c-e** for the remaining 3 connections.
- g) If you go back to the main settings screen, there are other options for setting up HSTouch.
- h) Connection Mode allows you to choose a default connection for each time you start HSTouch. *(HSTouch will no longer prompt to choose a connection at the beginning.)*
- i) Dim *Systembar* allows for the bottom systembar to be dimmed. *Font Scaling* allows for changing the scaling factor.
- j) *Auto Size* allows for auto-sizing of the project being used for your device. *Client Name* will allow you to change the name of your device's HSTouch Client. (For use with HSTouch Designer). *Zipcode* is used for weather.
- k) Now that your Client has been set up, go back to the Main Screen and go to the settings menu on the bottom right. Click Exit. Now go to your app drawer and click HSTouch. This will allow for any changes to take place.
- l) You are now ready to control your home via your device!



## STEP #9 – MyHS Remote

Welcome to the new MyHomeSeer Remote. MyHS will allow you to access your HS3 system from anywhere without having to touch your router. There are requires for MyHS to work. HS3 must be version 3.0.0.97 or later. HSTouch Android client requires 1.0.0.76 or later. Please make sure to update to these versions. It is recommended that you uninstall the application and then reinstall it from the Play Store/iTunes Store. *(This guide assumes you have HSTouch Server already set up. If you do not, please refer to the HS3 Quick Start Guide on setting that up).* Now, let's get started!



To begin using MyHSRemote you will need to register your HS3 software with the connected service.

### Registration

- a) Once the HSTouch has finished installing, go ahead and open it up. You will be prompted with a Log In to MyHS screen.
- b) Click *Register*. Your default browser will come forward and load the registration page.
- c) Enter in the preferred email address you would like to use to be tied to your MyHS for the *Account Email Address*. This will later be used as your MyHS username.
- d) Enter a preferred *Account Password*. You will use this as the password to enter in your MyHS settings.
- e) The *License ID* you are asked for is your HS3 licenseID. The same goes for your *License Password*. (For HomeTroller HS3 users, this is located on the bottom of your unit. For HS3 Software users, this information was emailed to you.)
- f) Click *Register*. You will receive a confirmation on the next screen unless errors are detected. You will also be emailed an email that requires a confirmation. Click the link in the email.

### Setting Up MyHS

The next step involves going into the HSTouch application and entering in your Account Username and Account Password.

- a) Open up the HSTouch application. It will give you the same prompt as earlier to Log In to MyHS.
- b) The email you used to register is your Username and the password you used will be used as the Password.
- c) Click Ok and HSTouch will now connect.
- d) HSTouch will now always connect through MyHS when launching. This will work from any location and any network.



## Register

### Account Information

Account Email Address

Account Password

Confirm Account Password

### HomeSeer System Information

License ID

License Password

Register

© 2014 - Homeseer Technologies

Log In to MyHS

Username

Password




Register... Settings...

Cancel Ok

## Icon Legend for HS3

This is a list of the icons that are found in HS3 with a description of their function.

*Note: Some buttons are multi-functional.*

ICON	DESCRIPTION
	Add / Delete
	Copy Event
	Standard Editing / Advanced Editing
	Toggle Edit Mode
	Enabled / Disabled
	Error communicating
	Expand / Collapse Section
	Marked Devices Shown/Header and Menus Shown – Marked Devices Hidden/Header and Menus Not Shown
	Access Log Settings
	Poll Devices for Status
	Reset Layout to Default
	Run Event
	Devices Ungrouped / Grouped
	Add a Keyword or Pair
	Group Conditions are used / not being used

*\*If you want to know what that button will do, just hover your cursor over the icon and small text will show to provide definition.*



## Troubleshooting HS3

All customers have lifetime support. Initially you have **30 Day Priority Phone Support** and after that you have support through our **Help Desk** ([helpdesk.homeseer.com](http://helpdesk.homeseer.com)) and our community based **Message Board** ([board.homeseer.com](http://board.homeseer.com)).

Symptom	Cause	Solution
Unit Won't Power On	Ac Adapter Unplugged	Plug-In Adapter
	AC Adapter Bad	Contact HomeSeer
	Power Cable Bad	
Unit Powers On But Won't Boot	USB Hardware Conflict	Detach USB Device And Reboot
	Software Failure	Contact HomeSeer
	Hardware Failure	
Z-Wave Devices Cannot Be Included Into Z-Wave Network	Device Was Previously Installed On Another Z-Wave Network	Use "Exclude Device" Procedure To Reset Device, Then Try To Include
	Device Failure	Replace Device
	Z-Stick Failure	Contact HomeSeer
HSDiscover Cannot Locate Device	HomeTroller Not Powered On	Power Unit On
	HomeTroller Not Fully Booted	Wait 2 Minutes For Unit To Boot
	HomeTroller Not Connected To LAN	Connect Unit To Router And Reboot
Door Locks Won't Include Or Can't Be Controlled	Inclusion Process Incorrect Or Incomplete	Exclude Devices and Repeat Procedure Outline In "Including Battery Powered Devices" Section
Sensors Won't Include Or Can't Be Monitored		
All Other Problems		Contact HomeSeer

### HomeSeer Technologies

10 Commerce Park North, Unit #10

Bedford, NH 03110

[www.homeseer.com](http://www.homeseer.com)

603-471-2816